

AGF800-48D Series

800 Watts

Data Sheet

Total Power: 800 Watts
Input Voltage: 36 - 75 V
of Outputs: Dual

SPECIAL FEATURES

- 2:1 wide input range
- Delivering up to 23.3 A for 30 V and 20 A for 5 V
- Extra wide trim range
- Optimised for high density, small space applications
- Low ripple and noise
- Fixed switching frequency
- Super high efficiency
- High capacitive load capability
- Basic insulation system
- Aluminium substrate
- Power good
- Auxiliary power rail

SAFETY

- UL/CSA 62368-1
- IEC62368-1



Electrical Specifications

Input	
Input range	36 - 75 Vdc
Efficiency	93.5%
Max input voltage - Continuous	80 Vdc
Max input voltage - Non-continuous	100 Vdc for 100 mSec
Output	
Output 1 voltage	30 V nominal
Output 1 current	23.3 A
Output 1 trim range	22 V - 33 V
Output 2 voltage	5 V nominal
Output 2 current	20 A
Output 2 trim range	3 V - 6V
Voltage tolerance	+/-1%
Line regulation	0.5%
Load regulation	30 Vo: 0.5% 5 Vo: 1%
Noise/ripple	30 Vo: 250 mV 5 Vo: 100 mV
OVP, OCP	Hiccup
Overtemperature protection	Auto restart
Switching frequency	290 KHz
Temperature co-efficient	±0.02/°C
Isolation	
I/O isolation	1500 VDC min.

Environmental Specifications

Operating ambient temperature range	-40 °C to + 85 °C
Storage temperature	-55 °C to +125 °C
Humidity	5% to 95% (non-condensing)
MTBF	2.8 Million hours
RoHS Compliant	

Ordering Information

Model number	Input voltage	Output voltage	Power
AGF800-48D3005-6L	36 - 75 Vin	30 V @ 23.3 A 5 V @ 20 A	800 W

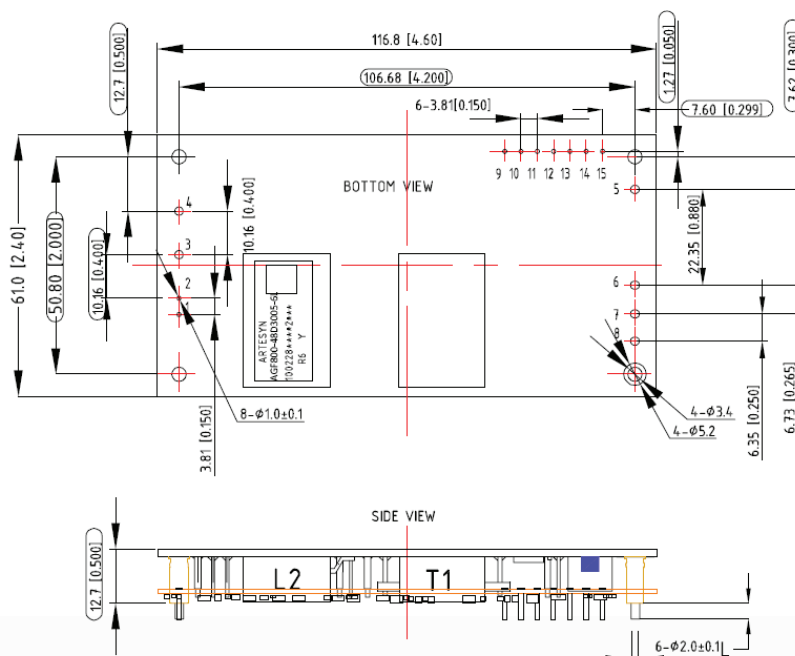
Standard version is negative enable

“-6” = 3.8 mm pin length

“-L” = RoHS 6 compliance

“/M” = Thread mounting hole

Mechanical Drawings



UNIT: mm[inch] PIN: L=3.8±0.25mm
 TOLERANCE: X.Xmm±0.5mm[X.XX in±0.02in.]
 X.XXmm±0.25mm[X.XXX in±0.01in.]

Pin Assignments

Pin #	Name	Function
1	+On/Off	Remote control
2	-On/Off	Remote control
3	Vin+	Positive input voltage
4	Vin-	Negative input voltage
5	Vo1+	Positive output voltage of output 1
6	Vo1-	Negative output voltage of output 1
7	Vo2-	Negative output voltage of output 2
8	Vo2+	Positive output voltage of output 2
9	Trim 2	Trim terminal of output 2
10	AUX	Auxiliary voltage
11	I0G	Inverter operation good of output 1
12	+S2	Remote sensing + of output 2
13	Trim 1	Trim terminal of output 1
14	+S1	Remote sensing + of output 1
15	-S1	Remote sensing – of output 1

Notes:

1. All specifications are subject to change without notice. Mechanical drawings are for reference only.
2. Warranty: 2 years
3. Label and logo appearance may vary from what is shown on mechanical drawings.
4. The rated voltage of output1 is 30 V. The rated voltage of output2 is 5 V.

WORLDWIDE OFFICES

Americas

2900 South Diablo Way
Suite B100
Tempe, AZ 85282, USA
+1 888 412 7832

Europe (UK)

Ground Floor Offices, Barberry House
4 Harbour Buildings, Waterfront West
Brierley Hill, West Midlands
DY5 1LN, UK
+44 (0) 1384 842 211

Asia (HK)

14/F, Lu Plaza
2 Wing Yip Street
Kwun Tong, Kowloon
Hong Kong
+852 2176 3333

ARTESYNTM
An Advanced Energy Company

www.artesyn.com

Artesyn Embedded Technologies, Artesyn Embedded Power, Artesyn, and all Artesyn related logos are trademarks and service marks of Artesyn Embedded Technologies, Inc. All other names and logos referred to are trade names, trademarks, or registered trademarks of their respective owners. Specifications are subject to change without notice. © 2020 Artesyn Embedded Technologies, Inc. All rights reserved. For full legal terms and conditions, please visit www.artesyn.com/legal.

For more information: www.artesyn.com
For support: productsupport.ep@artesyn.com